

What signage types do I need?

- Signage types
- Which liquor signs do I need?
- How should I display the compulsory signs?
- Voluntary liquor signs
- Sydney CBD Entertainment Precinct signs
- Kings Cross Precinct signs
- Can I make my own signs or photocopy them?
- More information
- How do I buy signs and stickers?

Signage types

Liquor signage

The law requires that all types of licensed venues display liquor signs.

This includes a number of compulsory signs, depending on which licence and authorisations you hold.

Liquor & Gaming NSW also have some voluntary signs that may be useful for your venue.

Other signage types you may need

Gaming and Keno signs

If your venue has gaming machines or offers Keno or public lottery sales, there are other signs you must also display. These are listed on the Gaming signage page.

Registered club signs

Registered clubs also have other signage requirements, shown on the Registered clubs signage page.

Which liquor signs do I need?

The signs you need will depend on your licence type and any authorisations you may have, as well as if you have a breath analysis machine.

Each sign is listed below with the licence types that must display that sign.

Key

C = This sign is compulsory
A = This sign may be required, depending on licence authorisations
B = This sign, or one with the same wording, is required when there is a breath analysis machine

Sign	Club	Hotel (full)	Hotel (general bar)	Small bar	On premises	Packaged liquor	Producer/wholesaler	Limited
1	C	C	C	C	C	C	C	C
2	C	C	C					
3		A	A		A			
4	B	B	B	B	B	B	B	B
5/5A					A			
6				C				
7						A	A	
8	C	C	C	C	C	C	C	C

How should I display the compulsory signs?

Sign 1L – Under 18s not to be served alcohol Required by: All premises



You must display this sign wherever you sell alcohol on licensed premises – at each bar and counter.

Where there is no bar or counter, you must prominently display the sign at each entrance to your premises.

You must buy this sign from L&GNSW and you can't reproduce it.

Sign 2L – Under 18s not permitted in this area Required by: Hotels and Clubs



You must display this sign in each bar area of a hotel or club.

A bar area is any area where you serve liquor – except for areas where a person under 18 can enter by law, such as a dining area or an authorised minors area.

You must buy this sign from L&GNSW and you can't reproduce it.

Sign 3L – Under 18 authorisation Required by: Hotels and public entertainment venues



This sign must be visible from each entrance to areas of a hotel where a minors area authorisation is in place. A minors area authorisation allows under 18s into an area of a hotel in the company of a responsible adult.

In the case of an on-premises licence for a public entertainment venue (not a cinema or theatre), this sign must be visible from each entrance to any area where you provide entertainment.

You must buy this sign from L&GNSW and you can't reproduce it.

Sign 4L – Breath testing sign Required by: Premises with breath analysis machines



You must display this sign next to a breath analysis machine if you have one.

You don't have to buy this sign from L&GNSW but you can't reproduce it without our permission.

However, you must use the same legal wording we use if you want to produce your own sign.

Sign 5L – Primary service authorisation (PSA) Required by: Restaurants with a primary service authorisation



You must display this sign at or near every entrance to your restaurant to tell people you have a primary service authorisation (PSA). A PSA allows you to sell or supply liquor without another product or service, such as a meal.

Sign 5L-A – Primary service authorisation (PSA) Required by: Premises with a primary service authorisation (other than a restaurant)

You must display this sign at or near every entrance to your premises to tell people you have a primary service authorisation.

For details on the wording and approved sign format for these venues, call our customer service team on 02 9995 0333.

Sign 6L – Under 18s not permitted during liquor trading hours Required by: Small bars



This sign applies to small bar licences. You must display this sign so people entering your premises can see it.

You must buy this sign from L&GNSW and you can't reproduce it.

Sign 7L – Alcohol not be sold to under 18s sign Required by: All internet operators You must display this sign – using the same wording as sign 1 – wherever you sell alcohol via the Internet.

It is against the law to sell or supply alcohol to, or obtain alcohol for, anyone under 18.

Sign 8L – Front of premises sign Required by: All premises You must display this sign at the front of your premises to show:

- the name of your premises
- the type of liquor licence you hold
- the name of your licensee

On-premises licences must also show the premises' type of business, such as a restaurant. A hotel designated as a general bar must show it is a general bar licence.

You must display this sign so people outside the front your premises can read it.

This sign is not available for purchase. You must create it yourself with the required information on it.

Voluntary liquor signs

Proof of age/sale to minors signs

We have several signs for customers and staff to indicate the requirements and penalties related to proof of age and underage alcohol purchase.

Signs for customers

Under 18? Don't risk it! sign



The Under 18? Don't risk it! sign tells customers what they risk if they try to buy alcohol if they are under 18.

Proof of age poster



Our proof of age poster helps front of house or bar staff tell potential customers about photo ID requirements. It also warns younger patrons that staff will check IDs.

The poster includes images of the forms of photo ID that NSW venues can accept under the law:

- current driver or rider's licence (issued in Australia or another country)
- NSW Photo Card (issued by NSW Roads & Maritime Services)
- passport (issued by Australia or another country)
- proof of age card (issued in Australian state or territory except NSW)
- Keypass (over-18) identity card (issued by Australia Post).

Signs for Staff

These signs are intended for behind the counter and remind staff of the risks involved for the licence and the staff member if alcohol is sold to minors.

Underage checklist



The Underage checklist sign is a handy guide for staff on how to check a patron's photo ID.

Its not worth the risk – refuse to sell



The Refuse to Sell sign is a quick visual guide for staff on the steps to take when checking customers' ID.

Liquor Accord signage

Many voluntary signs have been developed with Local Liquor Accords, and have been made available for download as PDF for printing either by a professional print company, or on your own colour printer.

Sydney CBD Entertainment Precinct signs

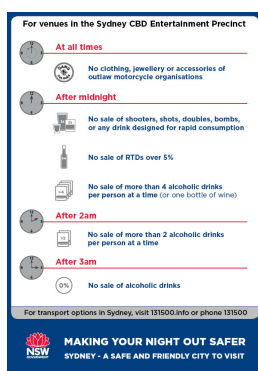
The following signs may be displayed at venues within the Sydney CBD Entertainment Precinct:

Lockout Law - entrance display



Download the Lockout Law poster (for entrance usage) (PDF, 88KB)

Lockout Law - internal display



Download the Lockout Law poster (for internal usage) (PDF, 95KB)

View the Special licence conditions for premises in the Sydney CBD Fact sheet (PDF, 1.47MB)

Kings Cross Precinct signs

The following signs may be displayed at venues within the Kings Cross Precinct.

Kings Cross venues are required to refuse entry to, or remove, any person wearing any form of clothing, jewellery or other accessory associated with a Gang:



No gang colours (PDF, 49KB)

Venues are also required to inform patrons of their requirements under the Fail to Quit laws:



Still on the spot? On the spot fine (PDF, 102KB)



No Excuse! \$550 on the spot fine (PDF, 248KB)

View the Special licence conditions for premises in Kings Cross Fact sheet (PDF, 1.73MB)

Can I make my own signs or photocopy them?

Signs 1L, 2L, 3L, 5L and 6L: These signs must be purchased from L&GNSW. You cannot make them yourself, reproduce or copy them, or customise them.

Signs 5L-A, 7L, and 8L: These signs must be produced by the licensee in accordance with the requirements listed above.

Sign 4L: may be purchased from L&GNSW or you may make a sign of your own with the same wording – but you can't reproduce or copy a sign purchased from L&GNSW

If you wish to display any of the **voluntary signs** you must purchase these from L&GNSW or use the downloadable liquor accord signs. You may create your own versions of these signs, but you can't reproduce or copy a sign purchased from L&GNSW.

Signs purchased from L&GNSW are made of a durable UV resistant hard plastic or an adhesive decal version for use on glass panels. They are designed to ensure a consistent message.

More information

Our fact sheet on Liquor Law Signs (PDF, 535KB) has more information on each sign and which venues need to have each sign.

How do I buy signs and stickers?

You can buy signs and other products from L&GNSW

- at the NSW Government's secure online purchasing website Shop NSW
- or you can complete a mail order form (PDF, 120KB).

Please note that we don't take orders for signs and products over the phone.

Related links

ShopNSW Clubs signageGaming signageGaming Machine Harm Minimisation fact sheet (PDF, 479 KB)Subscribe to eNews

Language & disability support services

For multicultural communities

For people with disability

Language assistance

About us

About us

Media & news

ILGA

Decisions of interest

Contact us

Liquor & Gaming NSW directory

L&GNSW feedback and complaints

Access to information (GIPAA)